

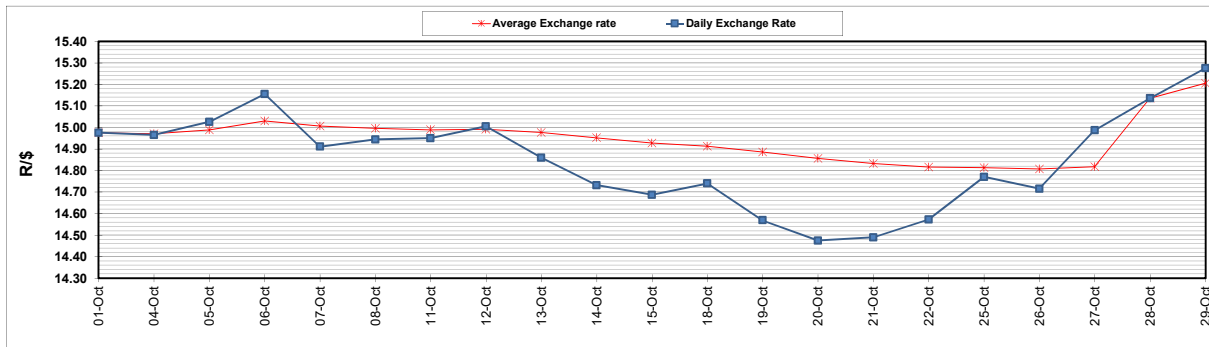
	PETROL 95 ULP	PETROL 93 ULP & LRP	DIESEL 0.05%	DIESEL 0.005%	ILL. PAR.
GAUTENG PUMP PRICE (SA c/l) AS FROM 03/11/2021	1,954.000	1,932.000	-	-	-
WHOLESALE PRICE (SA c/l) AS FROM 03/11/2021	-	-	1,719.980	1,723.380	1,125.488
SINGLE NATIONAL MAXIMUM RETAIL PRICE	-	-	-	-	1,433.000
BASIC FUEL PRICE - 29/10/2021 (SA c/l)	995.500	973.021	937.698	943.857	933.686
PRESS RELEASE CONTRIBUTION TO BFP 28/10/2021 - 29/10/2021 (SA c/l)	818.310	806.310	771.630	775.030	767.128
UNIT OVER/(UNDER) RECOVERY - 29/10/2021 (SA c/l)	(177.190)	(166.711)	(166.068)	(168.827)	(166.558)
AVERAGE BASIC FUEL PRICE 28/10/2021 - 29/10/2021	986.552	964.176	930.929	936.983	926.957
AVERAGE UNIT OVER/(UNDER) RECOVERY 28/10/2021 - 29/10/2021	(168.241)	(157.867)	(159.299)	(161.952)	(159.829)

ANALYSIS MOVEMENT OF AVERAGE OVER/(UNDER) RECOVERY

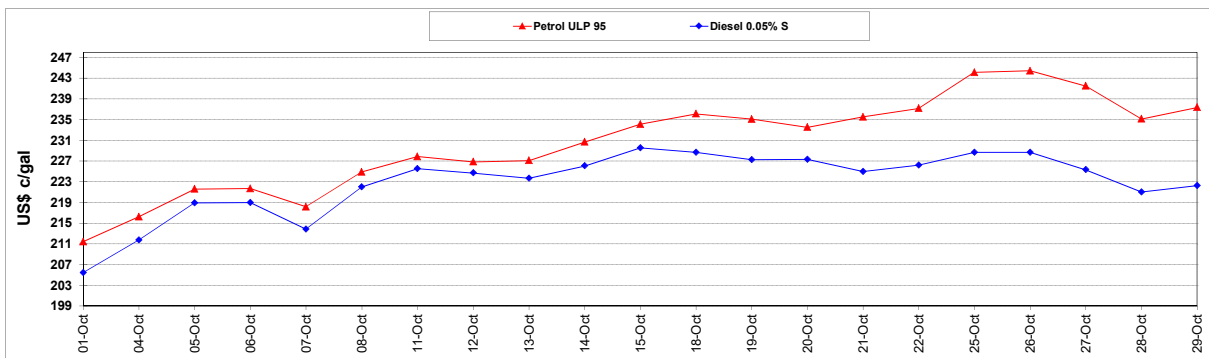
	PETROL 95	PETROL 93	DIESEL 0.05%	DIESEL 0.005%	ILL. PAR.
- MOVEMENT IN INTERNATIONAL PRODUCT PRICES	(143.074)	(133.269)	(135.550)	(138.050)	(136.182)
- MOVEMENT IN EXCHANGE RATE	(25.168)	(24.597)	(23.749)	(23.903)	(23.647)
AVERAGE UNIT OVER/(UNDER) RECOVERY 28/10/2021 - 29/10/2021	(168.241)	(157.867)	(159.299)	(161.952)	(159.829)

R/\$ EXCHANGE RATE - (R/\$15.2750 - 29/10/2021)

EXCHANGE RATE USED IN BASIC FUEL PRICE



INTERNATIONAL PRODUCT PRICES OF BASKET USED IN BASIC FUEL PRICE



BASIC FUEL PRICE IN SA CENTS PER LITRE

